

## USAID EDUCATION POLICY

The primary purpose of programming in education by USAID is to achieve sustained, measurable improvements in learning outcomes and skills development. The Policy applies to education programming across all levels (from pre-primary through higher education, including youth workforce development), contexts (stable contexts to crisis and conflict-affected environments), skills (reading, math, social-emotional, and technical/vocational), and populations (including children and youth who are experiencing marginalization or vulnerability).



### EDUCATION INDICATORS

Standard indicators help USAID staff and partners monitor, learn, and report against the Policy, enabling Missions to better:

- Align learning and accountability with the policy
- Improve measurement of access and systems strengthening
- Respond to congressional mandates and comply with operational policy (ADS)



### QUALITATIVE NARRATIVES

SPSD Narratives, Key Issue Narratives, and Indicator Performance Narratives are collectively referred to as qualitative narratives. These narratives help the Center for Education understand and communicate aspects of programming and achievements that are not easily conveyed through numbers.



### SUPPLEMENTAL INDICATORS

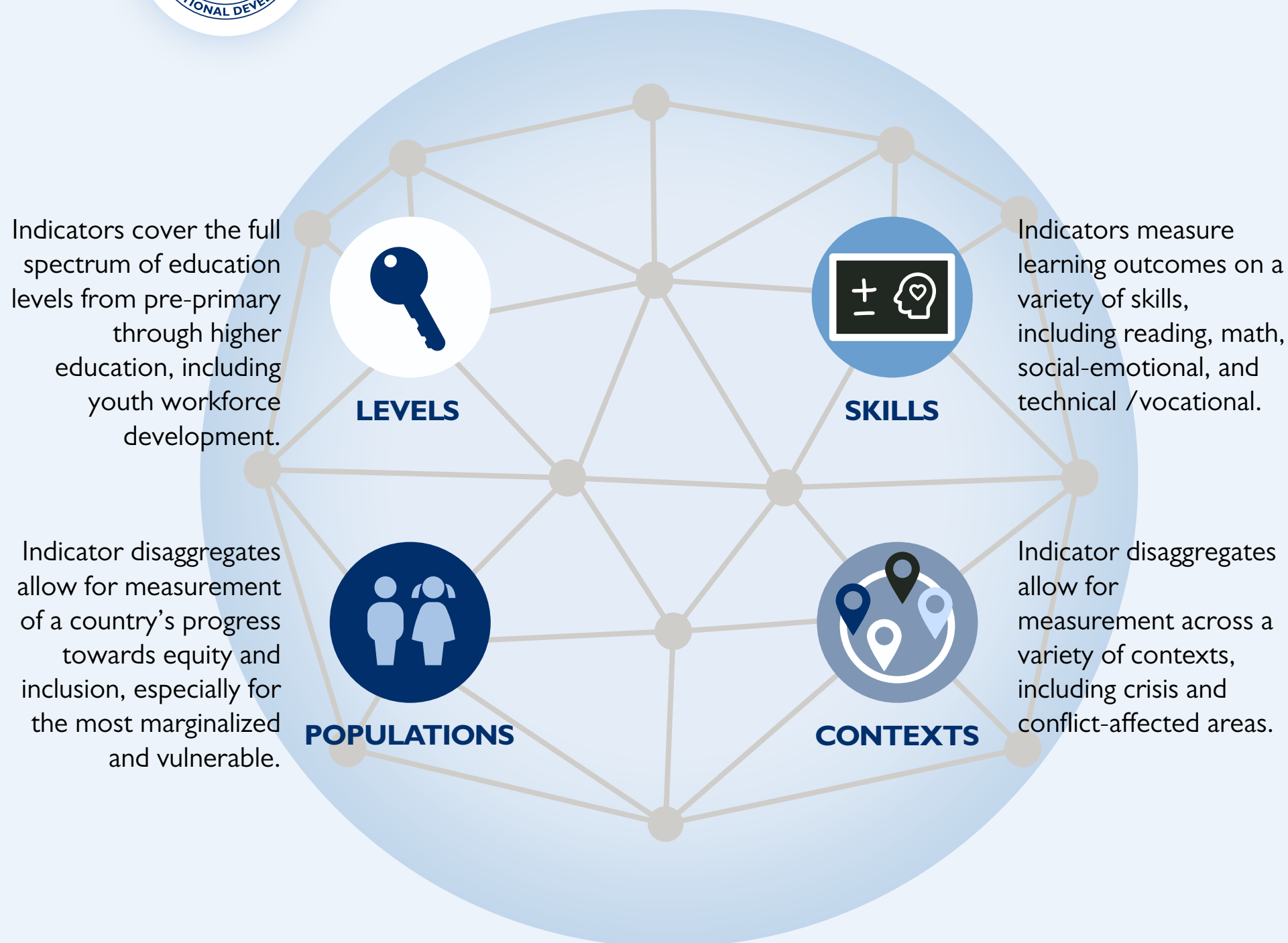
Supplemental indicators bring some of the benefits of standardization to non-aggregatable custom indicators. Supplemental indicators do not need to be reported in the PPR and will not be used for aggregate reporting.

# MEASURING IMPACT IN EDUCATION: REPORTING REQUIREMENTS



## VISION

PARTNER COUNTRY EDUCATION SYSTEMS ENABLE ALL CHILDREN AND YOUTH TO ACQUIRE THE EDUCATION AND SKILLS NEEDED TO BE PRODUCTIVE MEMBERS OF SOCIETY.



### ENSURING EQUITY & INCLUSION

Indicator disaggregates are essential to monitor USAID's engagement with children and youth who are experiencing marginalization or vulnerability, and to ensure programs reach their intended beneficiaries.

## LEARN MORE AT EDUCATIONLINKS

**Education Reporting Toolkit** ► [edu-links.org/indicators](https://edu-links.org/indicators)

**Helpdesk** ► [EDIndicators@usaid.gov](mailto:EDIndicators@usaid.gov)